

**Planning to
Pivot:**

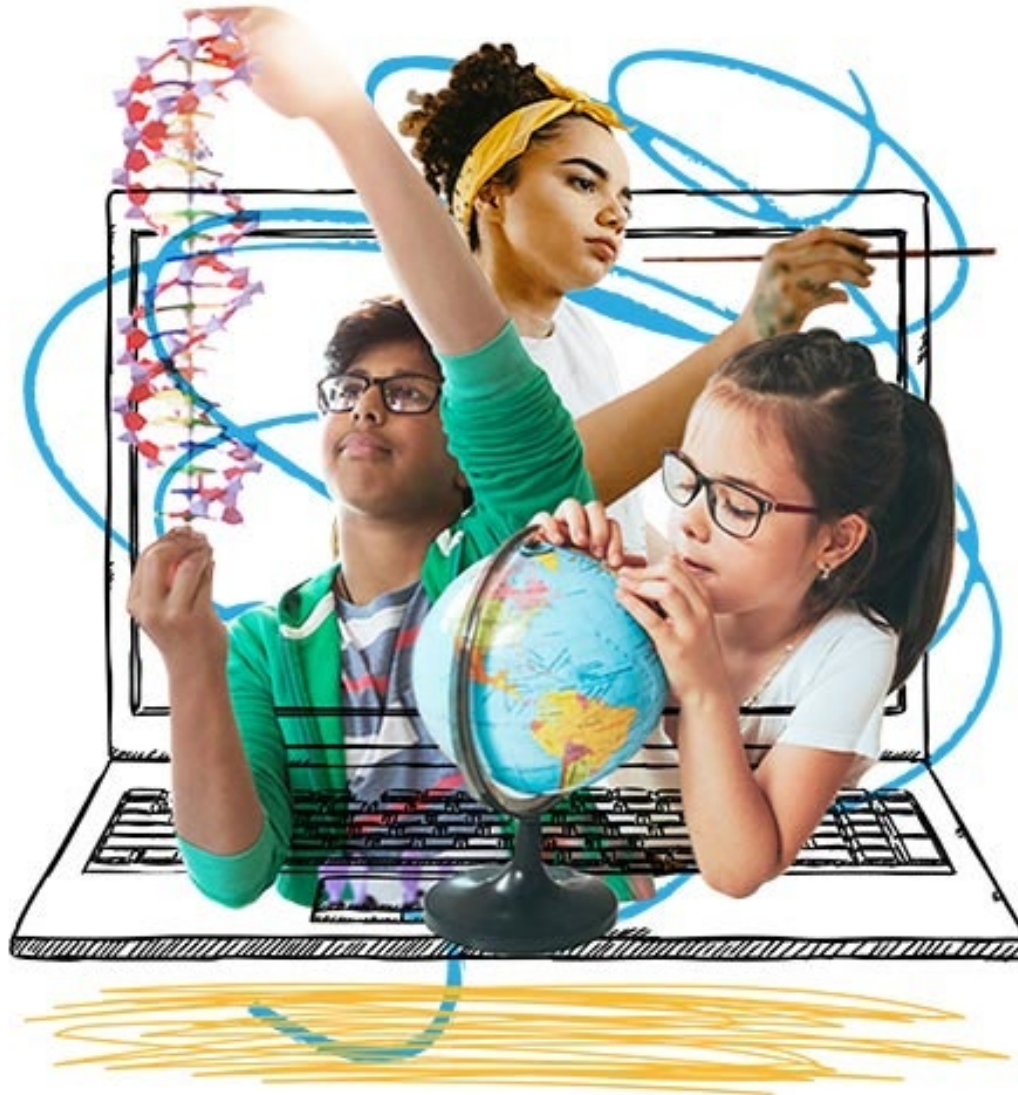
**Creating Schedules
to Enhance
Teaming K-8 in the
Era of Covid-19**

**Elliot Merenbloom
Educational Consultant
7 Elm Hollow Court
Baltimore, MD 21208
410-486-6822
elliott@merenbloom.com**

Full In-person Instruction



VIRTUAL





Hybrid Learning





THINK ABOUT PIVOTING

Opening Day of School	Pivot if Necessary	Pivot if Necessary
Full	Virtual	Hybrid
Full	Hybrid	Virtual
Full	Virtual or Hybrid	Go back to Full
Virtual	Hybrid	Full
Virtual	Full	Hybrid
Hybrid	Full	Virtual
Hybrid	Virtual	Full

Elementary Full In-Person

Module	Subject
0	Morning Meeting
1	Reading/Language Arts
2	Reading/Language Arts
3	Reading/Language Arts
4	Art / Music / Physical Education
5	Lunch
6	Math
7	Math
8	Intervention
9	Social Studies / Science

Elementary Virtual

Module	Minutes	Day 1	Day 2
1	15	Morning Meeting	Morning Meeting
2	60	Reading/Language Arts	Math
3	30	Social Studies	Science
4	30	Art	Music
5	60	Break / Lunch	Break / Lunch
6	60	Math	Reading/Language Arts
7	30	Science	Social Studies
	4.5 hours		

Elementary Hybrid

Module	Day 1	Minutes	Day 2
	IN-PERSON		IN-PERSON
1	Morning Meeting	15	Morning Meeting
2	Reading/Language Arts	90	Math
3	Art	45	Physical Education
4	Social Studies	45	Science
Total Minutes		195	
	VIRTUAL		VIRTUAL
5	Math	90	Reading/Language Arts
6	Physical Education	45	Music
7	Science	45	Social Studies
Total Minutes		180	

Middle School Full In-Person 8-Periods Plus Lunch

Period	Subject
0	Advisory
1	Reading / Language Arts
2	Reading / Language Arts
3	Social Studies
4	Art / Music
5	Lunch
6	Math
7	Math
8	Science
9	Technology / Physical Education

Middle School Full In-Person Day 1 / Day 2

Day 1	Subject	Minutes	Day 2	Subject
0	Advisory	15	0	Advisory
1	Reading/Language Arts	90	5	Reading/Language Arts
2	Social Studies	90	6	Science
3	Math – includes lunch	120	7	Math – includes lunch
4	Art / Music	90	8	Technology / Physical Education

Middle School Virtual

Module	Day 1	Minutes	Day 2
0	Advisory	15	Advisory
1	Reading/Language Arts	60	Math
2	Social Studies	30	Science
3	Art	30	Music
	Break / Lunch		Break / Lunch
4	Math	60	Reading/Language Arts
5	Science	30	Social Studies
6	Physical Education	30	Technology
Total Hours		5.25 Hours	

Middle School Hybrid

Period	In-Person Day 1	Minutes	Period	In-Person Day 2
0	Advisory	15	0	Advisory
1	Reading/Language Arts	75	1	Math
2	Art	45	2	Music
3	Social Studies	45	3	Science
	Total Hours	3.0		
	Virtual Day 1			Virtual Day 2
4	Math	75	4	Reading/Language Arts
5	Physical Education	45	6	Technology
6	Science	45	6	Social Studies
	Total Hours	2.75		

Strategies to Enhance Pivoting

COMMUNICATION with PARENTS AND COMMUNITY

- Maintain on-going communication with constituency groups
- Plan comprehensive orientation/expectation programs
- Assess student availability to computers and internet
- Establish teleconferencing opportunities

Strategies to Enhance Pivoting

ADMINISTRATIVE/SUPERVISORY RESPONSIBILITIES

- Maintain communication with Health Department and District Office
- Implement models to monitor achievement
- Modify website for curriculum suggestions
- Continue observations and evaluation of professional staff
- Monitor overall effectiveness of platform

Strategies to Enhance Pivoting

TEACHING/LEARNING

- Continuously monitor quality of instruction
- Design procedures to transition students to new platform
- Provide professional development for teachers for new platform
- Update approach to students with unique needs

Strategies to Enhance Pivoting

SUPPORT PERSONNEL

- Involve information-technology to support instructional strategies
- Adjust procedures for breakfast and lunch
- Review guidelines for security with custodial and transportation personnel
- Adjust procedures for reporting attendance

It's Not Too Early to Begin Thinking About School Year 2021-2022

- What conclusions have you reached about the strengths and weakness of platforms experienced?
- Why should you consider a defined intervention period in the school day?
- What preparations are needed for possible reduction in funding?
- Which team structures should be considered?
- How can common planning time be included during the regular school day?
- How should IEPs be written in light of pivoting?
- In light of COVID-19, why should the master schedule be designed for full in-person?

Scheduling Models for K-5 or K-6

THE
influence
OF A good
teacher
CAN NEVER BE
erased



Curriculum Chart: Minutes Per Day

Curricular Area	K	1	2	3	4	5	6
Reading/Language Arts	120	110	100	90	85	85	83
Mathematics	70	70	80	90	85	85	83
Social Studies	30	35	35	35	40	40	42
Science	30	35	35	35	40	40	42
Specials	45	45	45	45	45	45	45
Intervention	30	30	30	30	30	30	30
Social/Emotional Learning	30	30	30	30	30	30	30
Total Minutes	355	355	355	355	355	355	355

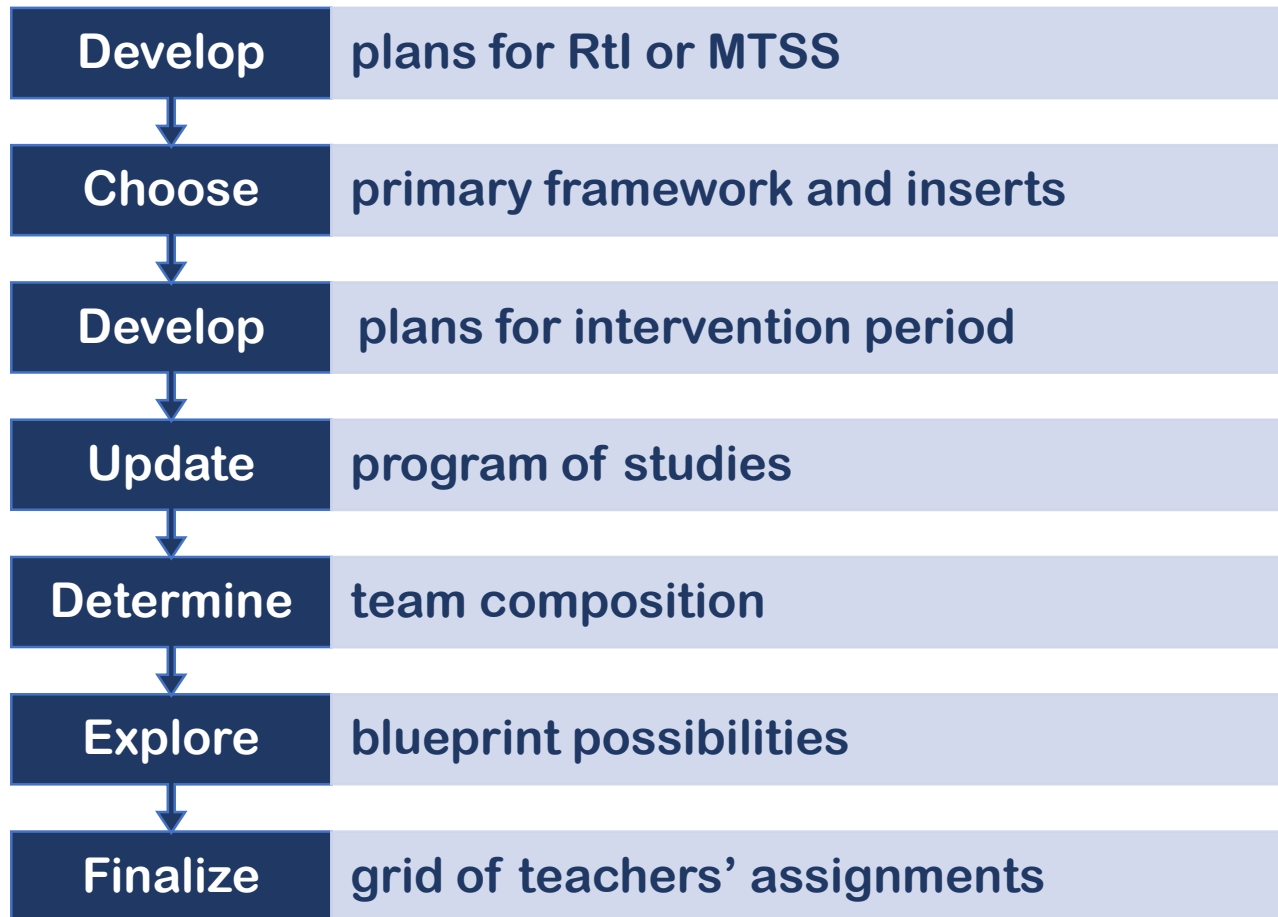
Grade	Section	1	2	3	4	5	6	7	8	9
K	01					L			S	I
	02					L			S	I
	03					L			S	I
	04					L			S	I
4A	01	S				I	L			
	02	S				I	L			
4B	03	S				I	L			
	04	S				I	L			
6A	01			I			S	L		
	02			I			S	L		
6B	03			I			S	L		
	04			I			S	L		
Specials		4					6		K	

Grade	Section	1	2	3	4	5	6	7	8	9
K	01	RLA			SS/Sci	L	Math		S	I
	02	RLA			SS/Sci	L	Math		S	I
	03	RLA			SS/Sci	L	Math		S	I
	04	RLA			SS/Sci	L	Math		S	I
4A	01: RLA/SS	S	RLA/SS 01			I	L	RLA/SS 02		
	02: M/Sci	S	Math/ Science 02			I	L	Math/ Science 01		
4B	03: RLA/SS	S	RLA/SS 03			I	L	RLA/SS 04		
	04: M/Sci	S	Math/ Science 04			I	L	Math/ Science 03		
6A	01: RLA/SS	RLA 01		I	SS 01	SS 02	S	L	RLA 02	
	02: M/Sci	M 02		I	Sci 02	Sci 01	S	L	M 01	
6B	03: RLA/SS	RLA 03		I	SS 03	SS 04	S	L	RLA 04	
	04: M/Sci	M 04		I	Sci 04	Sci 03	S	L	M 03	

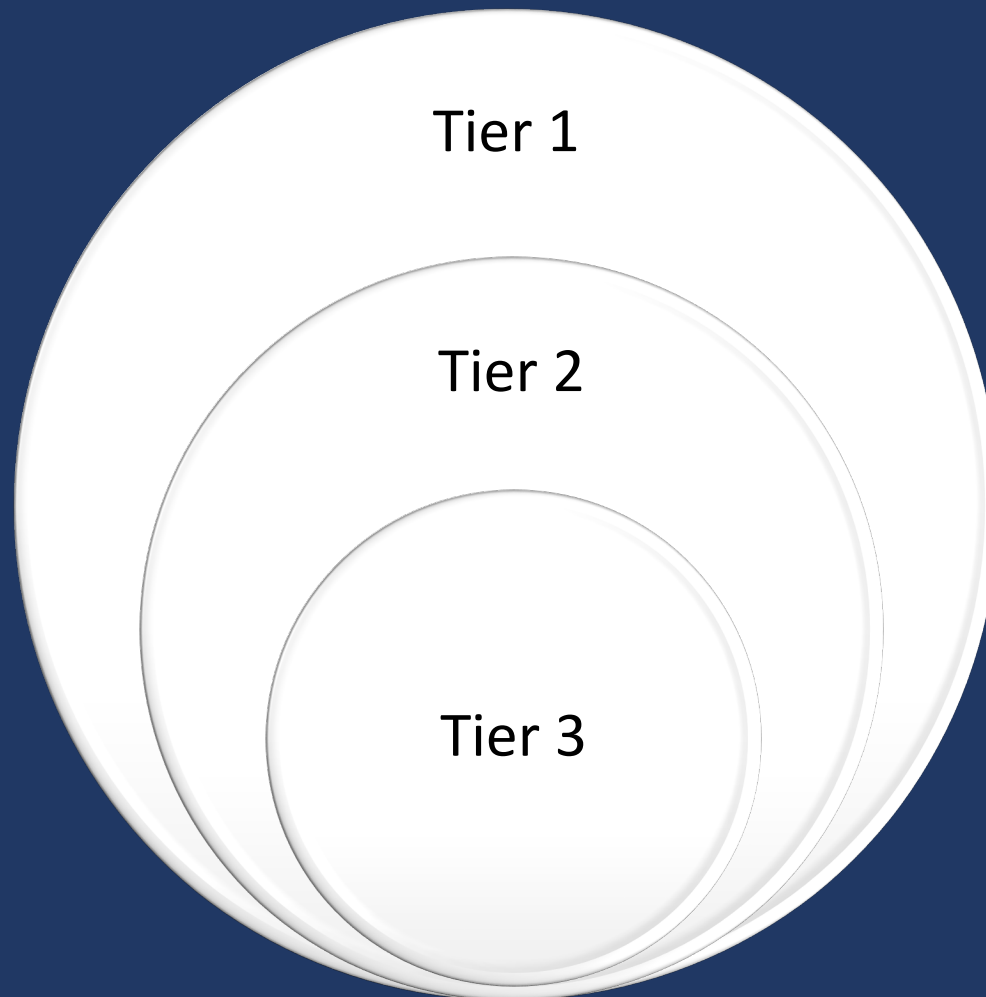
Blueprint for K-8 Schedule

		8:30	9:15	10:00	10:45	11:30	12:15	1:00	1:45	2:30
		9:15	10:00	10:45	11:30	12:15	1:00	1:45	2:30	3:15
Grade	Sections	1	2	3	4	5	6	7	8	9
PreK		Core	Core	Inter- vention	Lunch	Core	Core	Special	Core	Core
K		Core	Core	Inter- vention	Lunch	Core	Core	Special	Core	Core
1										
2										
3										
4										
5										
6		Special	Special	Core	Core	Core	Flex/A/I	Lunch	Core	Core
7		Special	Special	Core	Core	Core	Flex/A/I	Lunch	Core	Core
8		Special	Special	Core	Core	Core	Flex/A/I	Lunch	Core	Core

Suggestions for Building Middle School Schedules



Tiers of RtI/MTSS



Middle School: Tiers 1 and 2 in Master Schedule

Core		1	2	3	4	5	6	7
Team A	English	01	02	03	04	Flex/Adv/ Interv.	TM/DM	Plan
	Social Studies	04	01	02	03	Flex/Adv/ Interv.	TM/DM	Plan
	Math	03	04	01	02	Flex/Adv/ Interv.	TM/DM	Plan
	Science	02	03	04	01	Flex/Adv/ Interv.	TM/DM	Plan
	Special Ed.					Flex/Adv/ Interv.	TM/DM	Plan
Team B	English	05	06	07	08	Flex/Adv/ Interv.	TM/DM	Plan
	Social Studies	08	05	06	07	Flex/Adv/ Interv.	TM/DM	Plan
	Math	07	08	05	06	Flex/Adv/ Interv.	TM/DM	Plan
	Science	06	07	08	05	Flex/Adv/ Interv.	TM/DM	Plan
	Special Ed.					Flex/Adv/ Interv.	TM/DM	Plan

Traditional 7-Period Day



Middle School Student – Grade 7

Period	Subject
1	ELA – 7
2	Pre-Algebra
3	Physical Education / Spanish
4	Art / Technology / FCS / Music
5	Lunch
6	Social Studies
7	Science

Middle School Interdisciplinary Team

	Day 1				Day 2			
	1	2	3	4	5	6	7	8
English	01	02	03	TM/ DM	04	05	Flex/ Adv./Int.	TM/ DM
Social Studies	01	02	03	TM/ DM	04	05	Flex/ Adv./Int.	TM/ DM
Math	Alg 01	Alg 02	Geom 01	TM/ DM	Alg 03	Geom 02	Flex/ Adv./Int.	TM/ DM
Science	01	02	03	TM/ DM	04	05	Flex/ Adv./Int.	TM/ DM
Spanish	I-01	II-01	I-02	TM/ DM	II-02	I-03	Flex/ Adv./Int.	TM/ DM
Sp. Ed. Eng.-SS	Replace Eng	ICS Eng.	ICS SS	TM/ DM	ICS Eng	ICS SS	Flex/ Adv./Int.	TM/ DM
Sp. Ed. Math-Sci.	ICS Math	Replace Math	ICS Sci	TM/ DM	ICS Math	ICS Sci	Flex/ Adv./Int.	TM/ DM

Structural Frameworks: Inserts



- Double English/Double Math
- Single Subject
- Combination
- Interdisciplinary-Maximum Flexibility
- Interdisciplinary-Limited Flexibility
- Interdisciplinary-Exploratory

Two 4-Teacher Team Including Special Education

Core		1	2	3	4	5	6	7
Team A	English	01	02	03	04	Flex/Advisory Intervention	TM/DM	Plan
	Social Studies	04	01	02	03	Flex/Advisory Intervention	TM/DM	Plan
	Math	03	04	01	02	Flex/Advisory Intervention	TM/DM	Plan
	Science	02	03	04	01	Flex/Advisory Intervention	TM/DM	Plan
	Special Education	ICS Math	ICS ELA	Replace. ELA	Replace. Math	Flex/Advisory Intervention	TM/DM	Plan
Team B	English	05	06	07	08	Flex/Advisory Intervention	TM/DM	Plan
	Social Studies	08	05	06	07	Flex/Advisory Intervention	TM/DM	Plan
	Math	07	08	05	06	Flex/Advisory Intervention	TM/DM	Plan
	Science	06	07	08	05	Flex/Advisory Intervention	TM/DM	Plan

Program of Studies for Core Team: Option 1

Grade 6		Grade 7		Grade 8	
Reading/ Language Arts	10.0	Reading/ Language Arts	10.0	Reading/ Language Arts	10.0
Social Studies	5.0	Social Studies	5.0	Social Studies	5.0
Mathematics	10.0	Mathematics	10.0	Mathematics	10.0
Science	5.0	Science	5.0	Science	5.0
Total Core	30.0	Total Core	30.0	Total Core	30.0

Program of Studies Core Team: Option 2



		Grade 7		Grade 8	
Reading/ Language Arts	10.0	Reading/ Language Arts	5.0	Reading/ Language Arts	5.0
Social Studies	5.0	Social Studies	5.0	Social Studies	5.0
Mathematics	5.0	Mathematics	5.0	Mathematics	5.0
Science	5.0	Science	5.0	Science	5.0
		Technology/Art	5.0	Spanish	5.0
Total Core	25.0	Total Core	25.0	Total Core	25.0

Prototype for Individualizing Exploratory Experience

Course	Weeks	Quarter or Yearly
Physical education	20	Alternate day for the year
Band	20	Alternate day for the year
Orchestra	20	Alternate day for the year
Chorus	20	Alternate day for the year
Music	20	Alternate day for the year
Tier 3 math	20	Alternate day for the year
Tier 3 reading	20	Alternate day for the year
Art	10	Daily for quarter
Music	10	Daily for quarter
Health	10	Daily for quarter
Robotics	10	Daily for quarter
ELL or Special Ed. support	40	Daily for the year
World language	40	Daily for the year

Determine Middle School Teaming Options



Grade	Enrollment	Sections	Average Class Size	Teaming Options
6	200	8	25.0	4/4 2/2/2/2
7	200	8	25.0	4/4
8	245	10	24.5	5/5

Teaming Options: Maximum Flexibility



2 core teachers plus special education or ELL teacher:

- Language Arts/Social Studies
- Mathematics/Science
- Special Education/ ELL

3 core teachers plus special education or ELL teacher:

- Language Arts/Reading + Social Studies
- Language Arts/Reading + Mathematics
- Language Arts/Reading + Science
- Special Education/ ELL

3 Core teachers plus special education or ELL teacher:

- Language Arts + Flex/Advisory
- Social Studies + Flex/Advisory
- Mathematics + Flex/Advisory
- Special Education/ELL+ Flex/Advisory

4 Core teachers plus special education or ELL teacher:

- Language Arts + Flex/Advisory
- Social Studies + Flex/Advisory
- Mathematics + Flex/Advisory
- Science + Flex/Advisory
- Special Education/ELL

5 Core teachers plus special education or ELL teacher:

- Language Arts + Flex/Advisory
- Social Studies + Flex/Advisory
- Mathematics + Flex/Advisory
- Science + Flex/Advisory
- World Language + Flex/Advisory
- Special Education/ELL + Flex/Advisory

5 teachers (4 core plus 2 explo) plus special education and ELL

- Language Arts + Flex/Advisory
- Social Studies + Flex/Advisory
- Mathematics + Flex/Advisory
- Science + Flex/Advisory
- Technology/Art + Flex/Advisory

Blueprint: Traditional Schedule

Lunch is Full Period

	Grade 6	Grade 7	Grade 8
1	Core	Core	Exploratory
2	Core	Core	Exploratory
3	Core	Core	Core
4	Exploratory	Lunch	Core
5	Lunch	Core	Core
6	Exploratory	Core	Lunch
7	Core	Exploratory	Core
8	Core	Exploratory	Core

Traditional Schedule: Modular Lunch

	Grade 6	Grade 7	Grade 8
1	Core	Core	Exploratory
2	Core	Core	Exploratory
3	Core	Core	Core
4	Core	Core	Core
5	Core	Exploratory	Core
6	Core	Exploratory	Core
7	Exploratory	Core	Core
8	Exploratory	Core	Core
Lunch between:	4 and 5	5 and 6	6 and 7

Day 1/Day 2 Schedule:

Lunch is a Module before, during, or after Periods 3 and 7

	Grade 6	Grade 7	Grade 8
1	Core	Core	Core
2	Core	Core	Exploratory
3	Core	Exploratory	Core
4	Exploratory	Core	Core
5	Core	Core	Core
6	Core	Core	Exploratory
7	Core	Exploratory	Core
8	Exploratory	Core	Core

All scheduling models set the stage for team approaches to instruction in elementary and middle schools.



What is a Team?

Teachers collaborate at defined times to:

- respond to needs of students
- analyze data
- integrate curriculum including skill development
- develop plans for delivery of instruction
- focus on best instructional practices
- integrate social-emotional learning into the daily curriculum
- coordinate intervention program
- manage time effectively

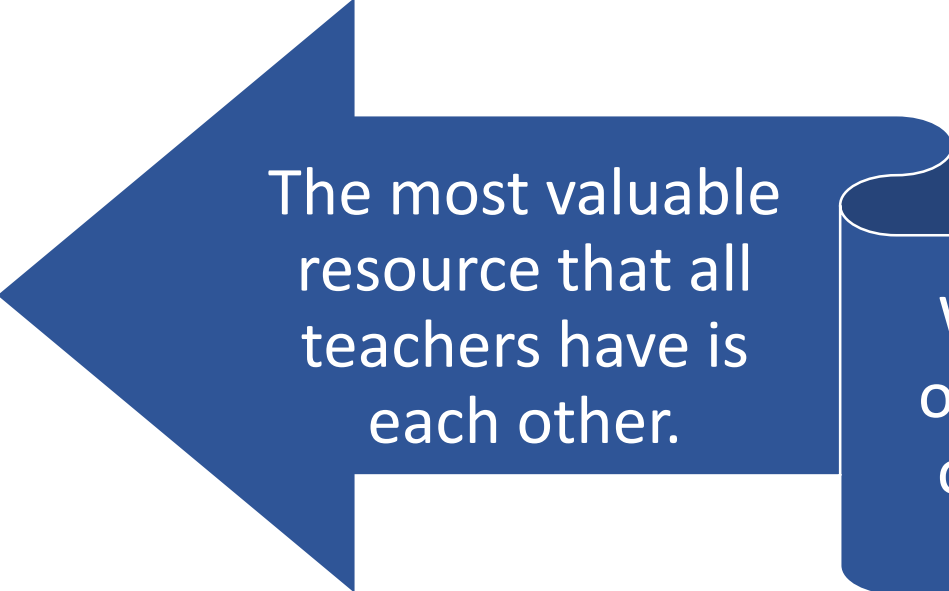
Teaming Possibilities

Option	K-5 or K-6	K-8	Middle School
Grade Level Teams	X	X	
Grade Level Math and Reading Regrouping	X	X	
2-Teacher Teams	X	X	X
3-Teacher Teams	X	X	X
4-Teacher Teams (subject specialists)		X	X
Special Education and ELL	X	X	X
5-Teacher Teams (subject specialists)		X	X
6-Teacher Teams (subject specialists)		X	X
2-Interdisciplinary Teams at Grade Level		X	X
Exploratory	X	X	X

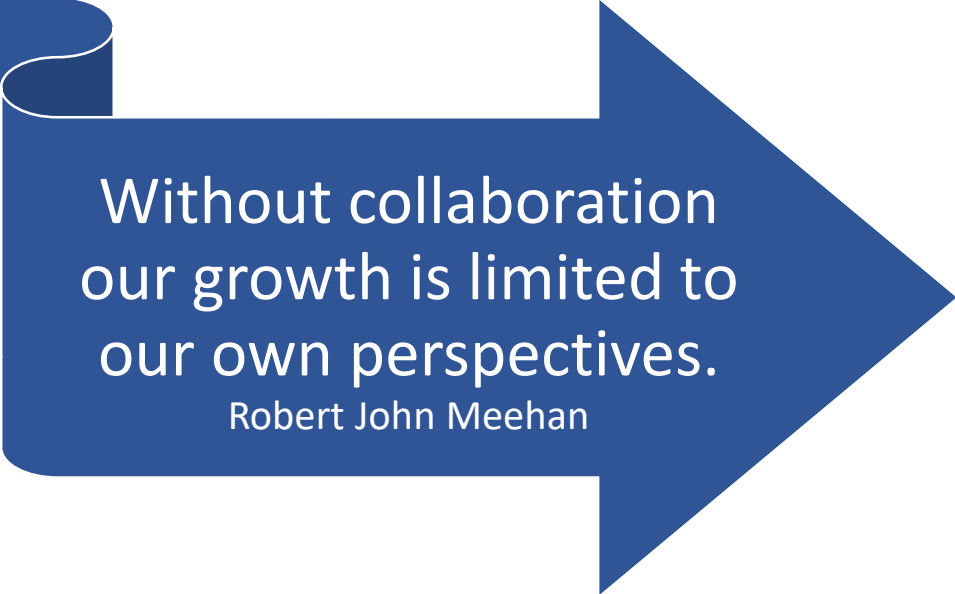
Reflections

CREATIVITY
INSPIRATION
IDEA
DEVELOPMENT
RESEARCH
CONCEPT
INVENTION
TECHNOLOGY
INNOVATION

- What has been the most meaningful part of this webinar?
- As a result of this webinar, I plan to.



The most valuable
resource that all
teachers have is
each other.



Without collaboration
our growth is limited to
our own perspectives.
Robert John Meehan